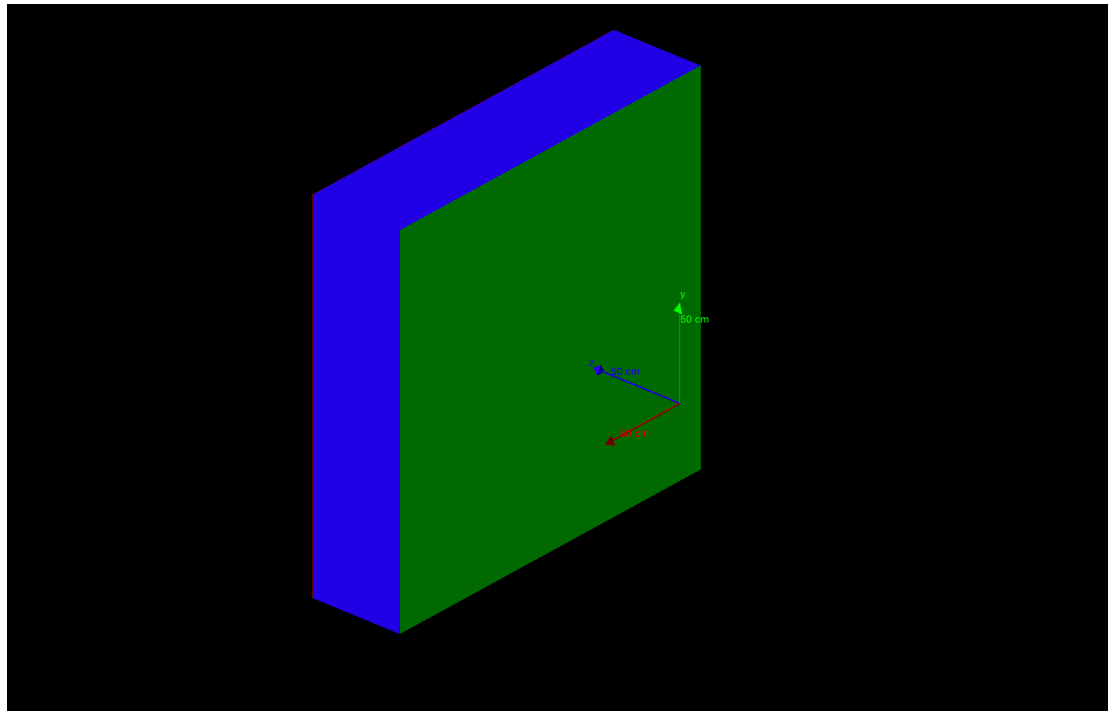
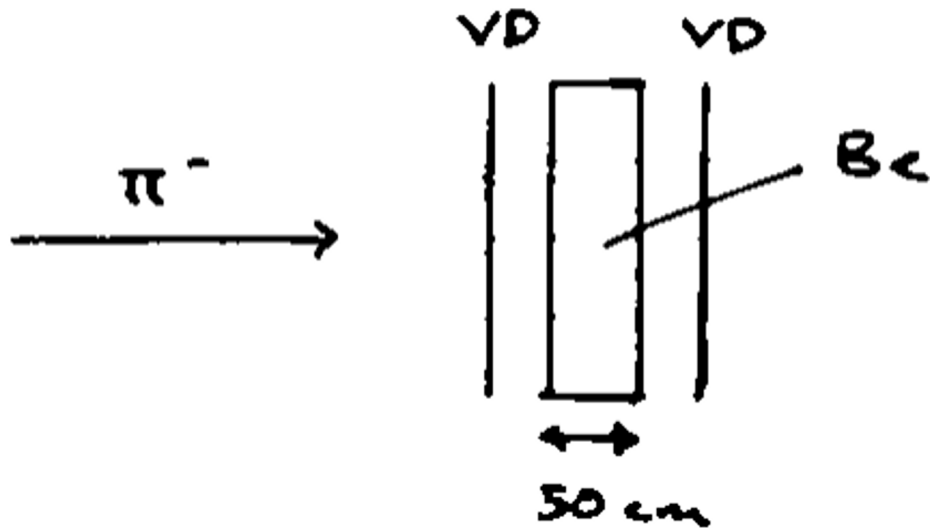


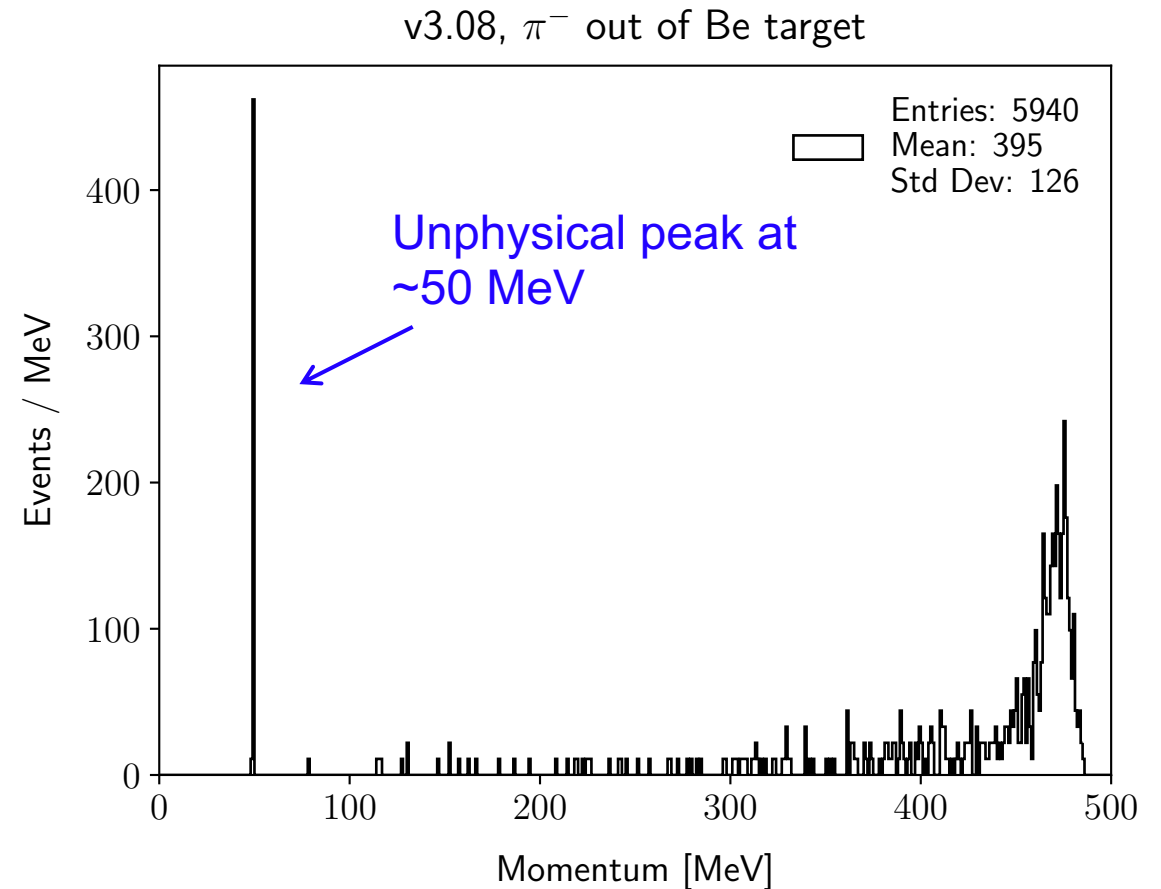
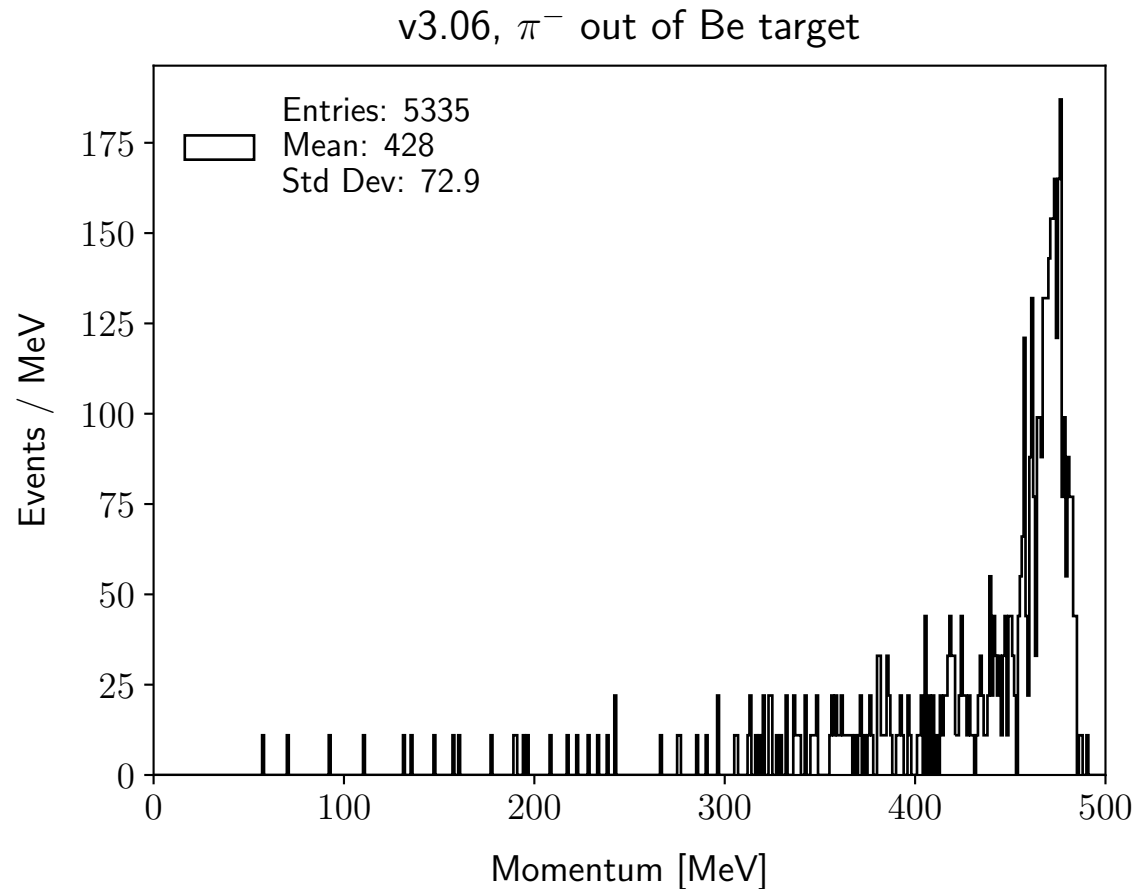
G4beamline test setup

- Fire a beam of 500 MeV π^- at a 50 cm thick Be target
- Place virtual detectors at the forward and backward faces
- Observe the momentum distribution of π^- exiting the target



Momentum of π^- exiting the Be target

- Decreased the Be maximum step size from 100 mm to 0.05 mm
- Ran for 10,000 events at 500 MeV, using both G4beamline-3.06 (Geant4.10) and G4beamline-3.08 (Geant4.11)
- A ~ 50 MeV unphysical peak is visible when using v3.08



Maximum step size in Be scan

- Scanned a range of maximum step values using v3.08
- The peak begins to appear at maxStep=0.163 mm
- I have yet to try this with different materials

